



Valid to August 31st 2023

NOTCH-GRIP

GROOVE-TURN LINE | THREAD TURNING LINE



GRADE : IC908

A tough submicron substrate with a PVD coating, recommended for general use for diverse operations on materials such as steels, alloy steels, austenitic stainless steel and high temperature alloys at a wide range of cutting speeds. Features high wear resistance and chipping durability.

GRADE : IC808

A tough submicron substrate with excellent chipping resistance, combined with a "SUMO TEC" PVD coating. Provides high wear resistance. Recommended for a very wide range of materials.

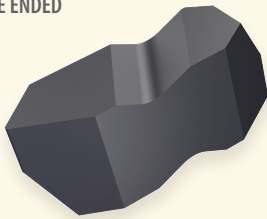
GRADE : IC907

A tough submicron substrate with a PVD coating. Suitable for low-to-medium cutting speeds. Developed for machining of heat resistant alloys, austenitic stainless steel and hard steel.

OVER 400 INSERT VARIATIONS AVAILABLE!

60° PARTIAL PROFILE THREADING FLAT TOP

DOUBLE ENDED



\$18.22

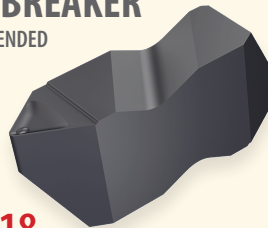
FLT-3R IC908

MODEL NUMBER: 2411892

A.C.T. NUMBER: 304311

60° PARTIAL PROFILE THREADING WITH CHIPBREAKER

DOUBLE ENDED



\$19.18

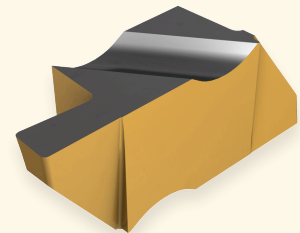
FLT-3R-CB IC908

MODEL NUMBER: 2413048

A.C.T. NUMBER: 315226

GROOVING FLAT TOP

DOUBLE ENDED



\$20.27

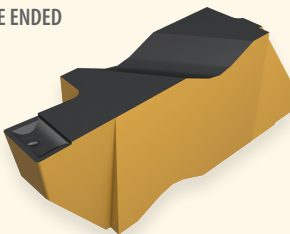
ING3062L IC808

MODEL NUMBER: 6405479

A.C.T. NUMBER: 278979

GROOVING WITH CHIPBREAKER

DOUBLE ENDED



\$21.31

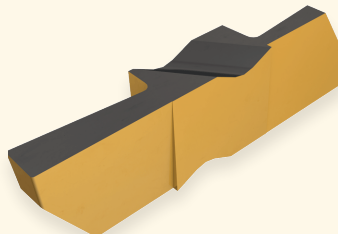
ING3094LCB IC907

MODEL NUMBER: 6411923

A.C.T. NUMBER: 319970

DEEP GROOVING FLAT TOP

DOUBLE ENDED



\$29.39

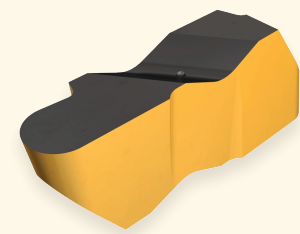
INGT3125L IC907

MODEL NUMBER: 6411998

A.C.T. NUMBER: 325032

RADIUS GROOVING FLAT TOP

DOUBLE ENDED



\$20.27

INR3094R IC808

MODEL NUMBER: 6405459

A.C.T. NUMBER: 304310

NOTCH-GRIP INSERTS FIT MOST INDUSTRY STANDARD HOLDERS